



Improving Maternal Outcomes

Severe Maternal Hypertension



Facility Background

- Providence Alaska Medical Center Maternity Services
- 10 OB Triage Rooms
- 10 Labor and Delivery Rooms
- 31 Mother-Baby Rooms
- 7 Antepartum Rooms
- 60 bed Level III NICU
- 2567 deliveries in 2020
- 145 cases of severe range blood pressures in 2020 (5.6%)

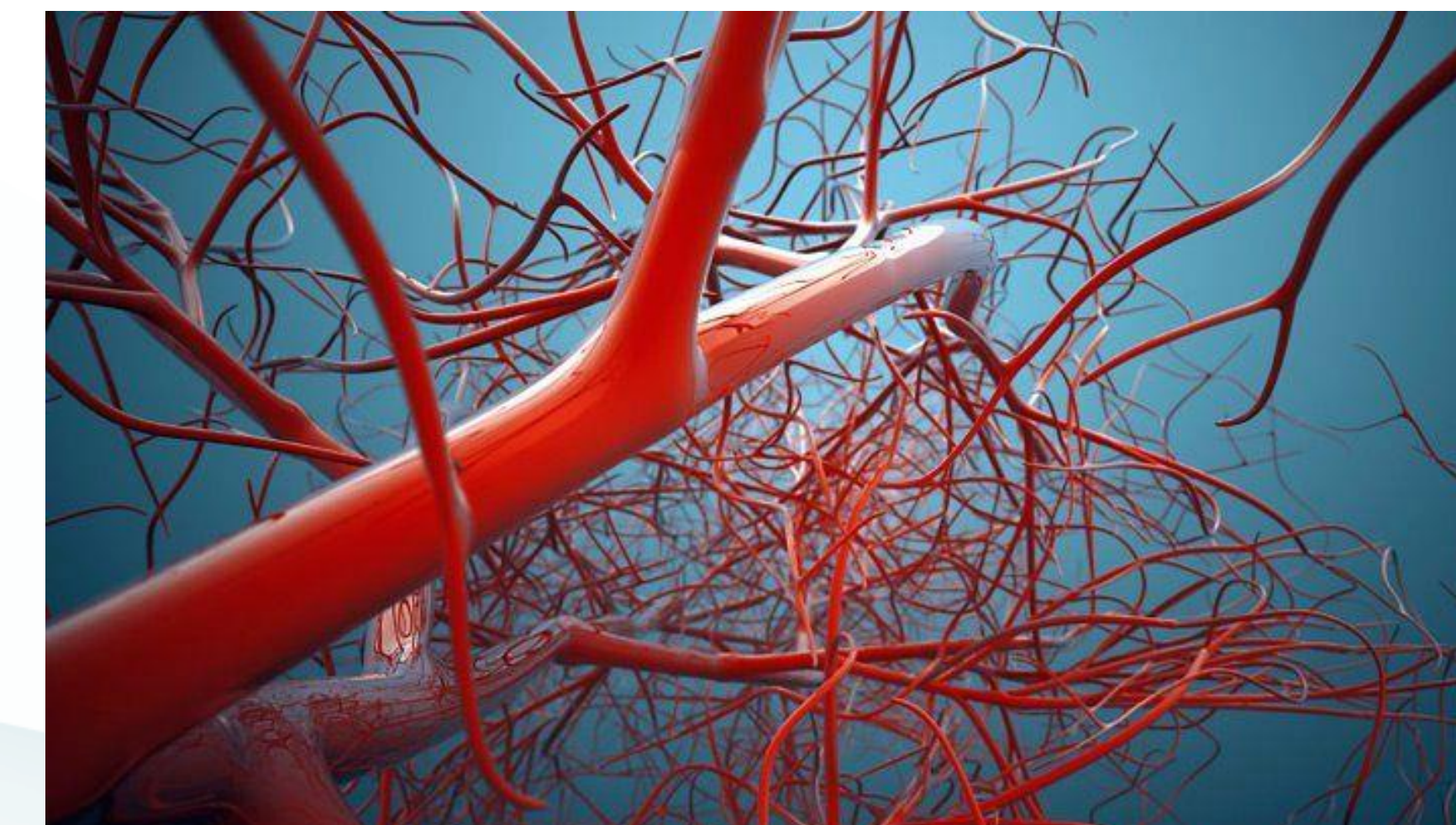


Activities

- Standardized order set with hypertensive medications
- Maternal Early Warning Trigger (MEWT)
- Hypertension Toolkit integrated into Electronic Medical Record (EMR)
- Rapid access to hypertensive medications
- Training of nurses through online Relias education modules
- In situ simulations
- Standard of work for blood pressure measurement including documenting the circumference of the upper arm
- Critical Maternal Event Review process for debrief at the time of event
- Multidisciplinary case reviews both by physicians and nurses
- Review of patient education materials and discharge instructions
- Monthly review of all cases of severe range blood pressures through Washington State Hospital Association (WSHA) Maternal Data Center
- Incorporated hypertension performance goal into nursing yearly evaluations

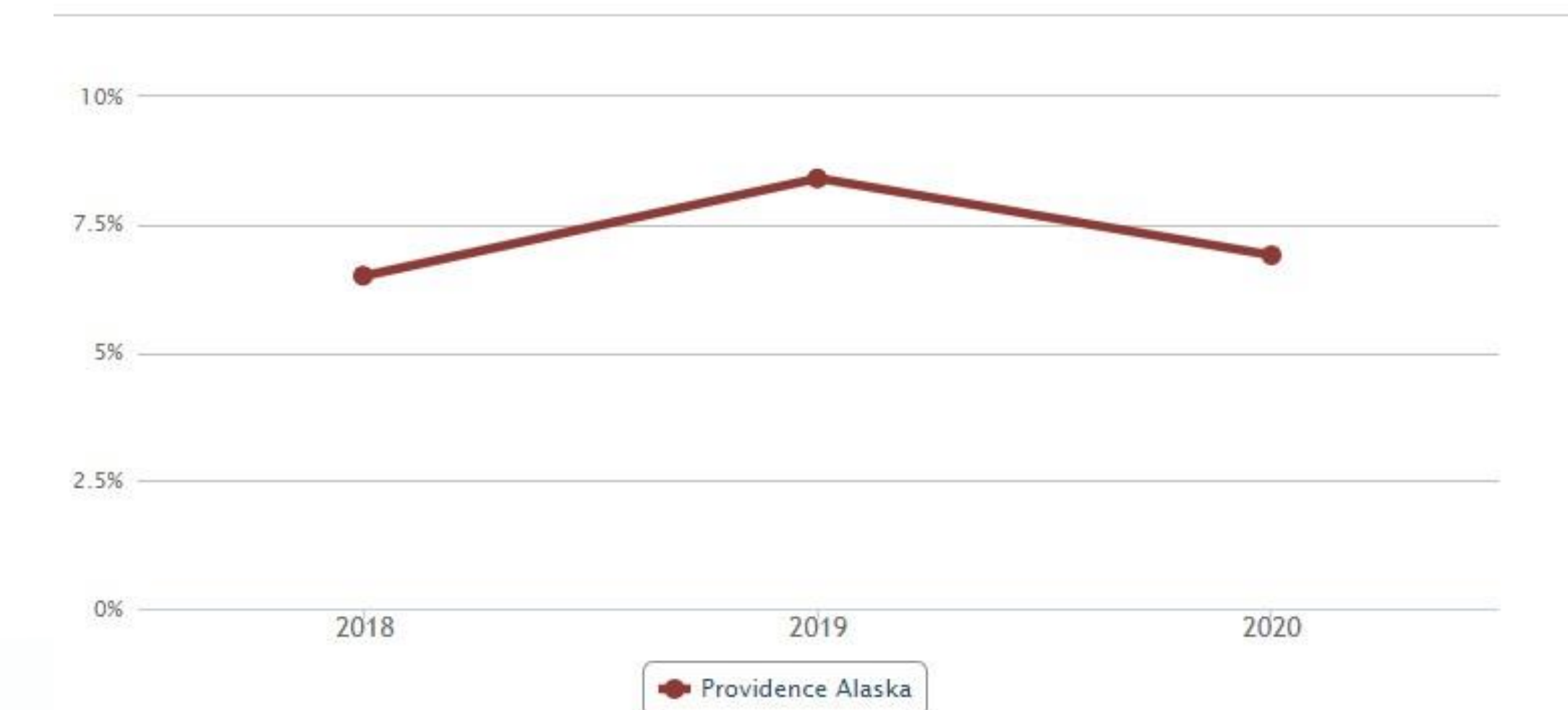
Challenges

- Integrating existing hypertension tools with PQC measures
- Developing a process to easily review cases in the EMR
- Challenge of engaging physicians in education/simulation
- Caring for the OB Triage patient
- Caring for newly admitted patient
- COVID priorities
- Documentation of the completion of debrief
- Attendance at case review
- Care of ED and ICU patient



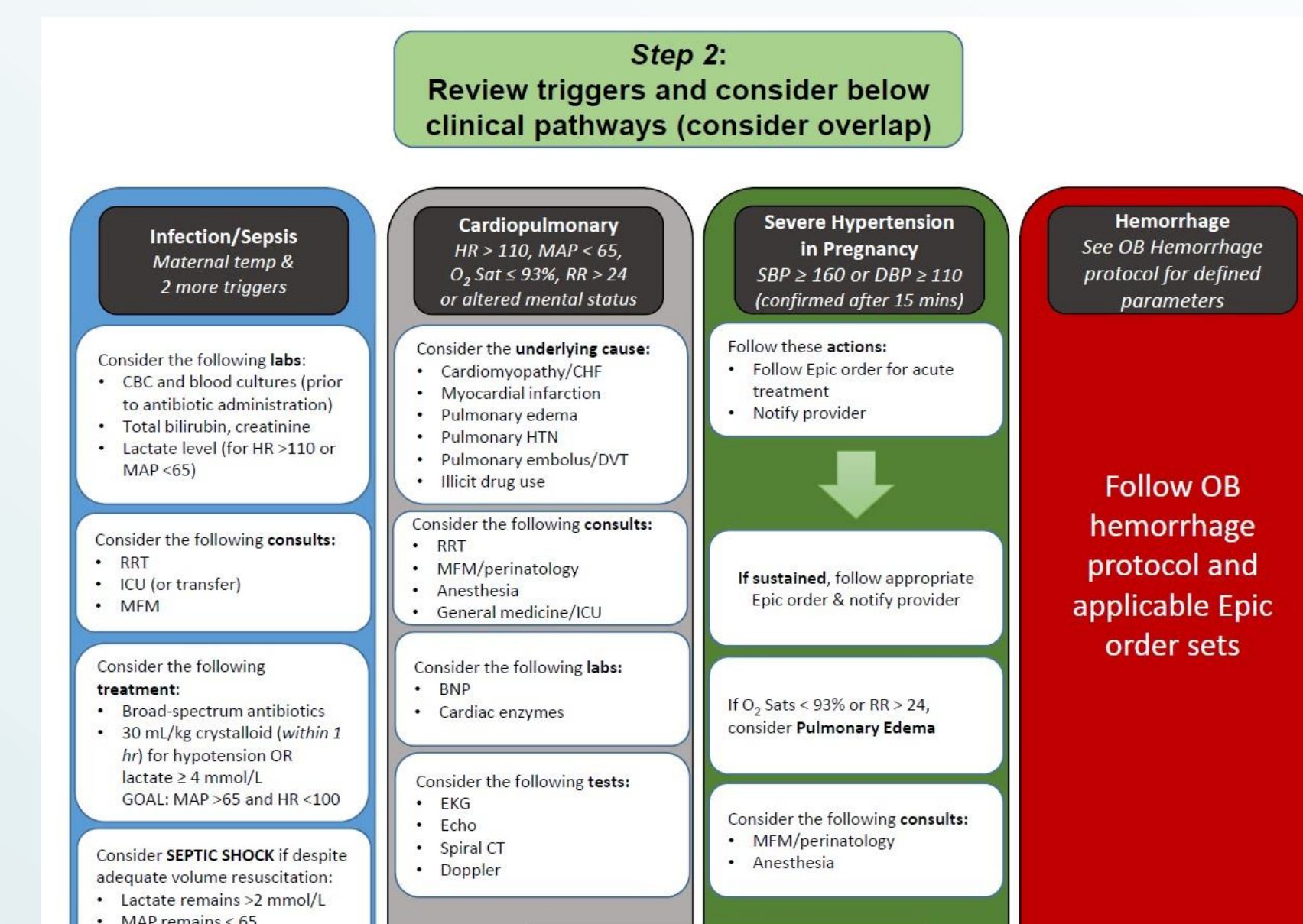
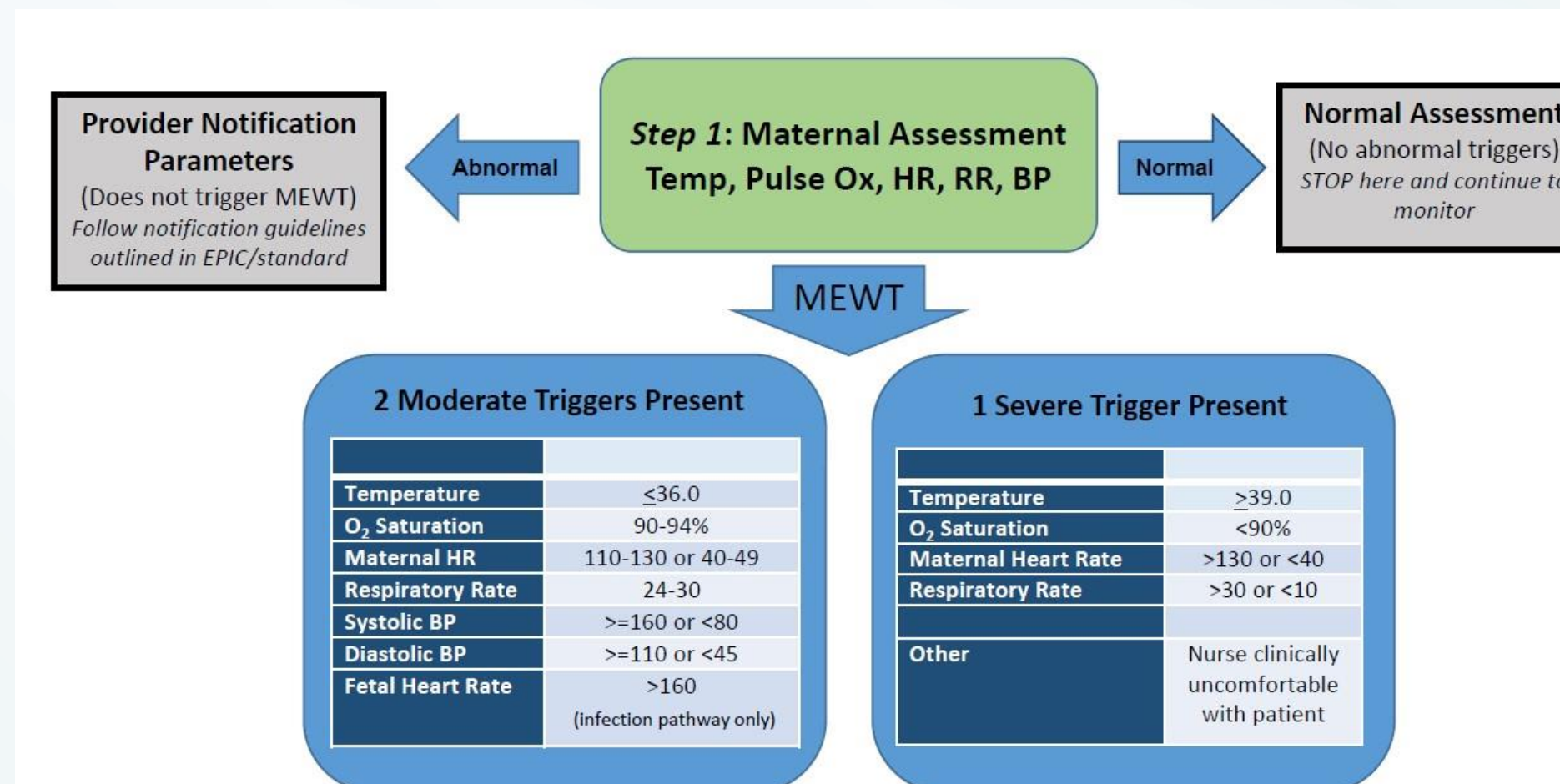
Severe Maternal Outcomes

- Measures of Severe Maternal Morbidity from Pre-eclampsia
- Excludes cases with blood transfusion
- 2019 rate was 8.4%
- 2020 rate was 6.9% (Goal 6.72%)
- 2020 health system rate was 8.7%
- Still working towards decreasing rate to zero
- Plan to present data quarterly to Staff and Providers
- Data displayed on unit Quality Boards



Period	Providence Alaska
2020	6.9%
2019	8.4%

Hypertension Pathway/MEWT



Measures

Measure	Type	Goal
Severe Maternal Morbidity Among Preeclampsia Cases	Outcome	Reduce by 20%
Timely Treatment of Hypertension	Process	Increase to 80%
Provider Education	Process	Increase to 80%
Nurse Education	Process	Increase to 80%
Systematic Debriefs	Structure	Increase to 100%
SMM Review	Structure	Increase to 100%
Patient Education*	Process	Increase to 80%
Follow-up visits*	Process	Increase to 80%
Debriefs*	Process	Increase to 50%

*optional

Timely Treatment

- Measures from July 2019-December 2020
- 225 cases reviewed
- 2020 rate 81.3% (Goal 80%)
- Health system overall rate 76.0%
- Reduced variation of practice
- 3 months with 100% timely treatment



Future Plans

- Group provider education through the OB Quality meetings (April 2020)
- Encourage providers to participate in simulations
- 2021 hypertension simulations in progress
- Engage the ED and ICU in this work
- Continue to measure timely treatment of severe hypertension
- Develop ways to support patients, families, and staff following a severe event
- Review resources for patients
- Monitor readmission rates for severe pre-eclampsia

Thank you to Heather Andersen, BSN, RN, CPN, CPHQ for your data reporting, data mining, and QI expertise



For more information
Danette Schloeder, MSN, RNC-OB, C-EFM
Danette.Schloeder@providence.org